

The popup space allows students and instructors to reflect on, respond to, and reimagine the surrounding world; yet it also offers a respite from everyday life.

### FUNCTIONAL

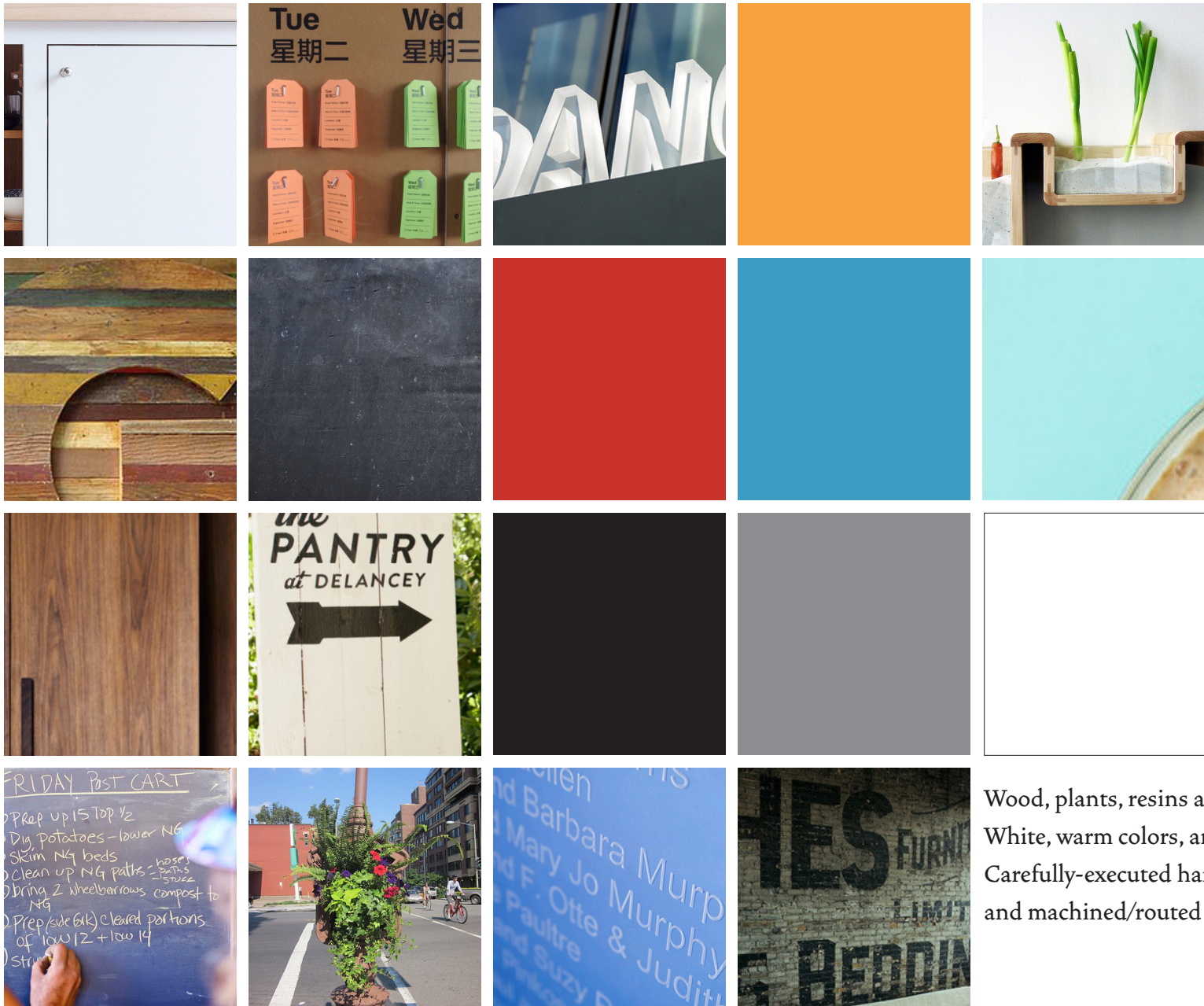
The space must be accessible, inviting and clean, and easy to keep clean and to maintain.

It should adapt readily to a variety of class formats and events.

### EXPERIENCE/IDENTITY

The space should present KCDC as inventive, spirited, and intensely competent.

# Material and Color / Option A, Precision and Nature

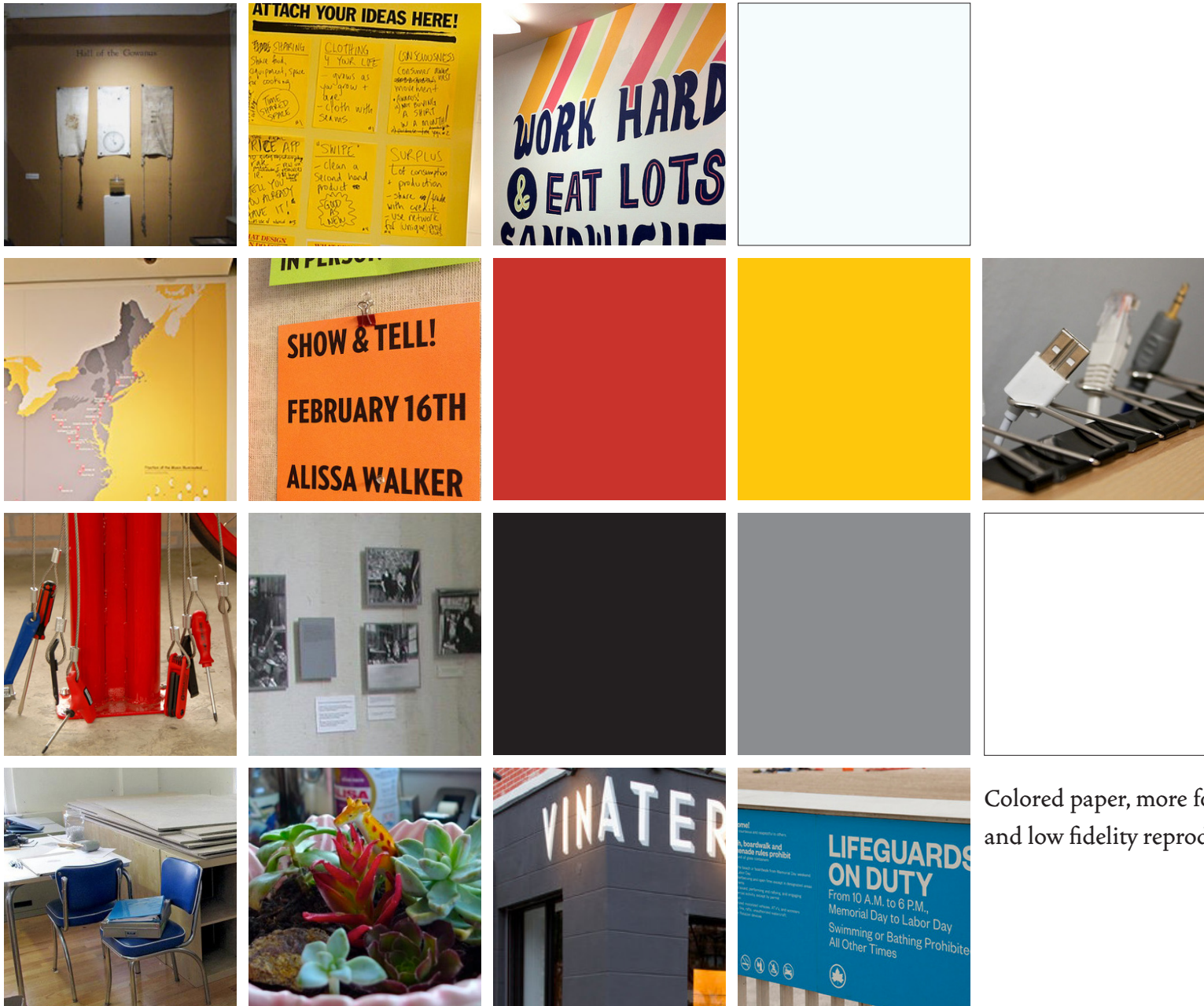


Wood, plants, resins and laminates.

White, warm colors, and summer-sky blues.

Carefully-executed hand lettering, chalk, and machined/routed dimensional lettering.

# Material and Color / Option B, Paper and Limits



Colored paper, more found furniture and low fidelity reproduction.